



Lessons from Community-Based Conservation Approach in the Laramie Foothills

February 9, 2010



Landscape context

Community-based conservation approach

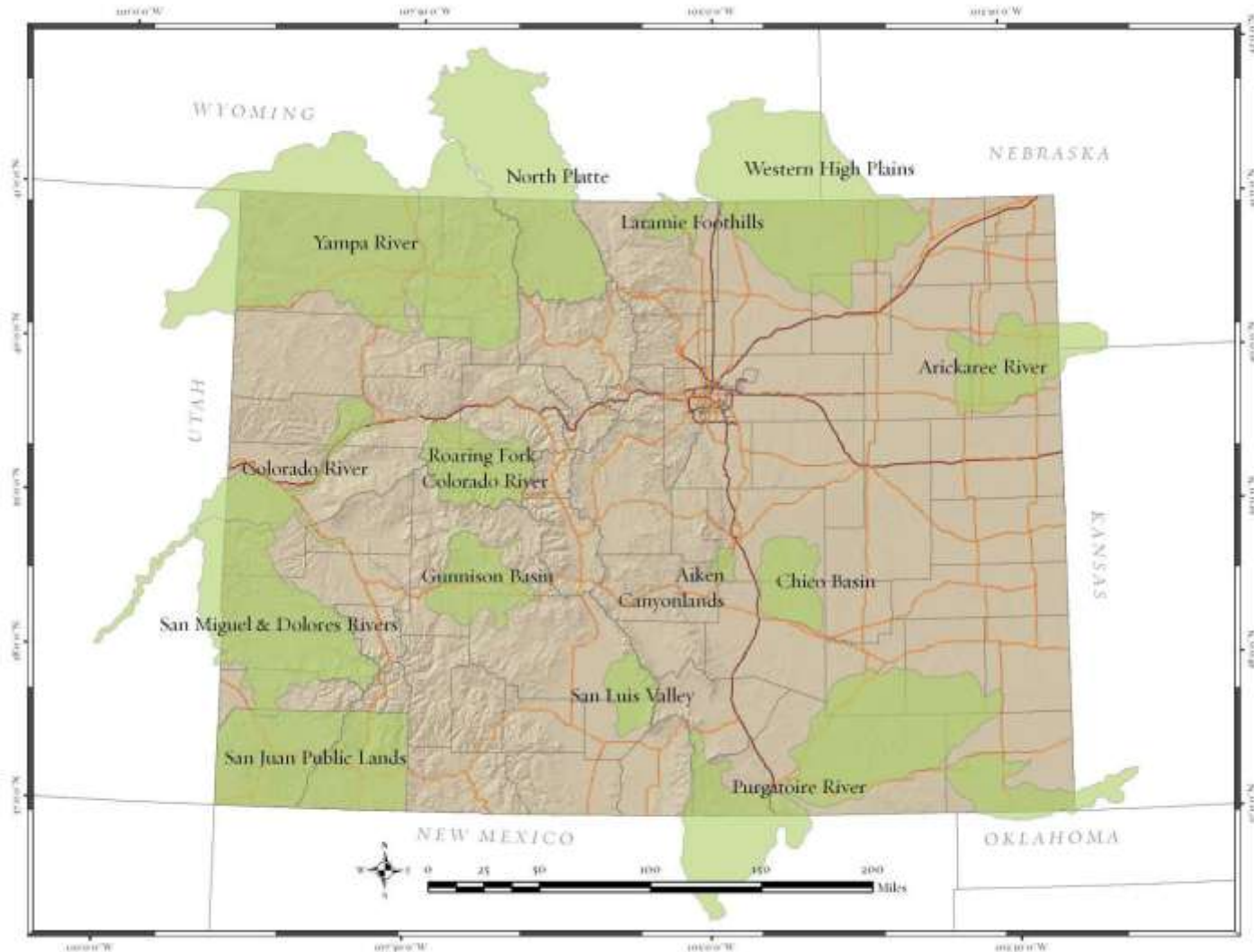
Evolution of the Laramie Foothills project

Results

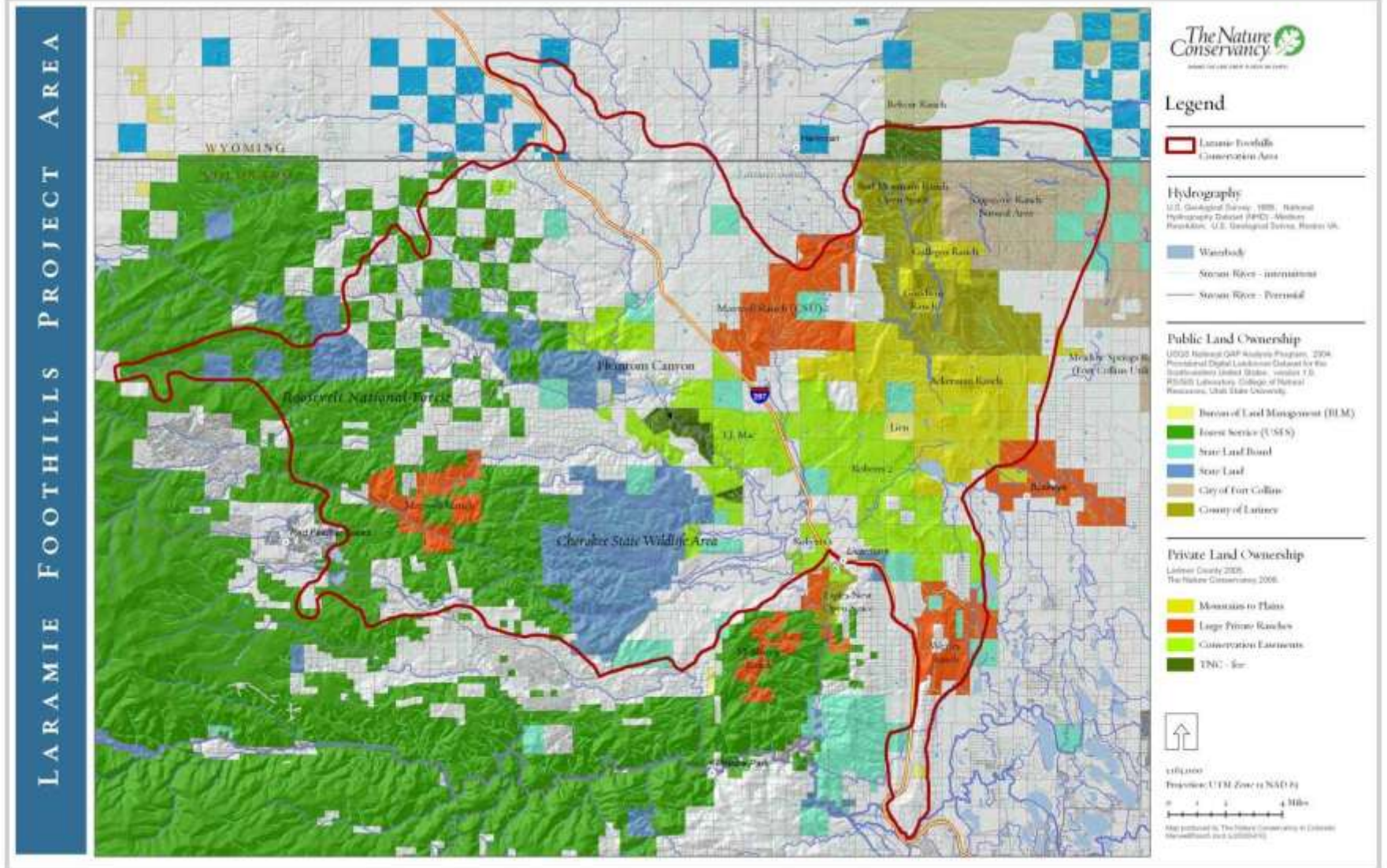
Challenges ahead

Lessons learned

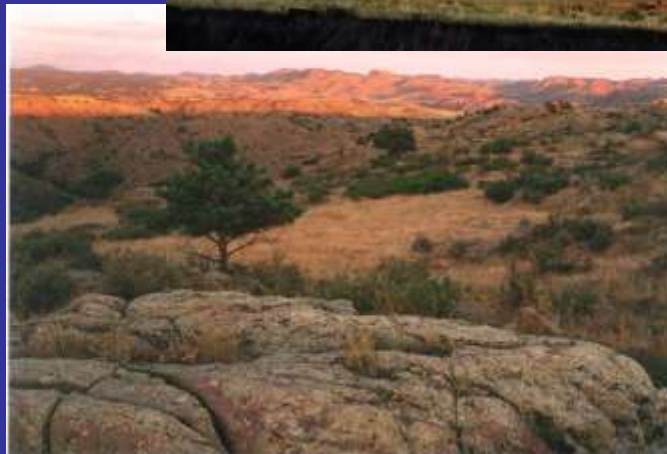
TNC Colorado Priority Landscapes



Laramie Foothills Conservation Area



Natural Landscape



Human Landscape



Laramie Foothills: Approach

Intensive
C-B C

Selective Strategic
Engagement

Conservation Reserve
or “Bull Pen”



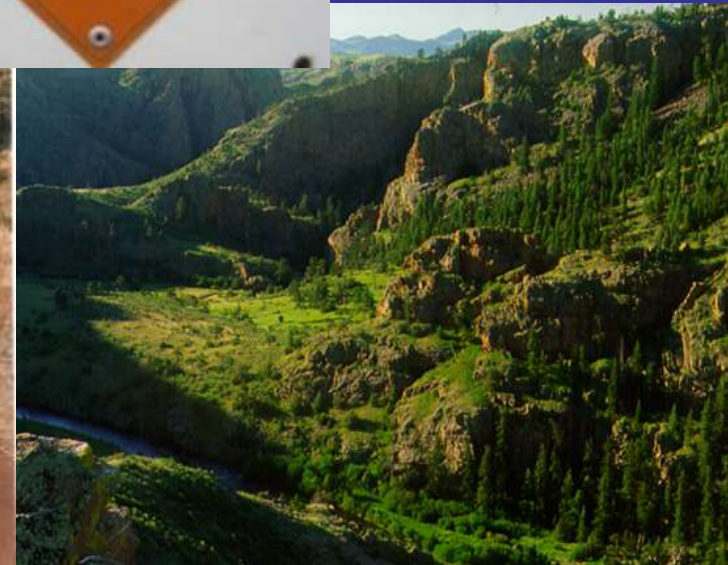
- ✓ high biodiversity
- ✓ high threats to biodiversity
- ✓ complex strategies
- ✓ no partner (s) and/or lead role necessary
- ✓ lots of time or \$ needed

- ✓ high biodiversity
- ✓ high threats to biodiversity
- ✓ less complex strategies
- ✓ 1 or more partner (s)
- ✓ TNC to assist with resources, science, planning

- ✓ Low to high threats to biodiversity
- ✓ Partners abating threats
- ✓ TNC monitor and assist when needed

Laramie Foothills: mid 1980s – early 1990

- ≈ start-up years
- ≈ traditional land trust approach
- ≈ work focused inside TNC's boundary
- ≈ knowledge of place
- ≈ establish TNC's role and identify, engage and learn from partners



Laramie Foothills: early to mid 1990's

- building years
- community-based conservation approach
- shared conservation vision across boundary
- conservation values, identify threats, design strategies & to abate threats at scale
- work focused outside TNC's boundary
- getting dirty-shared work & learning

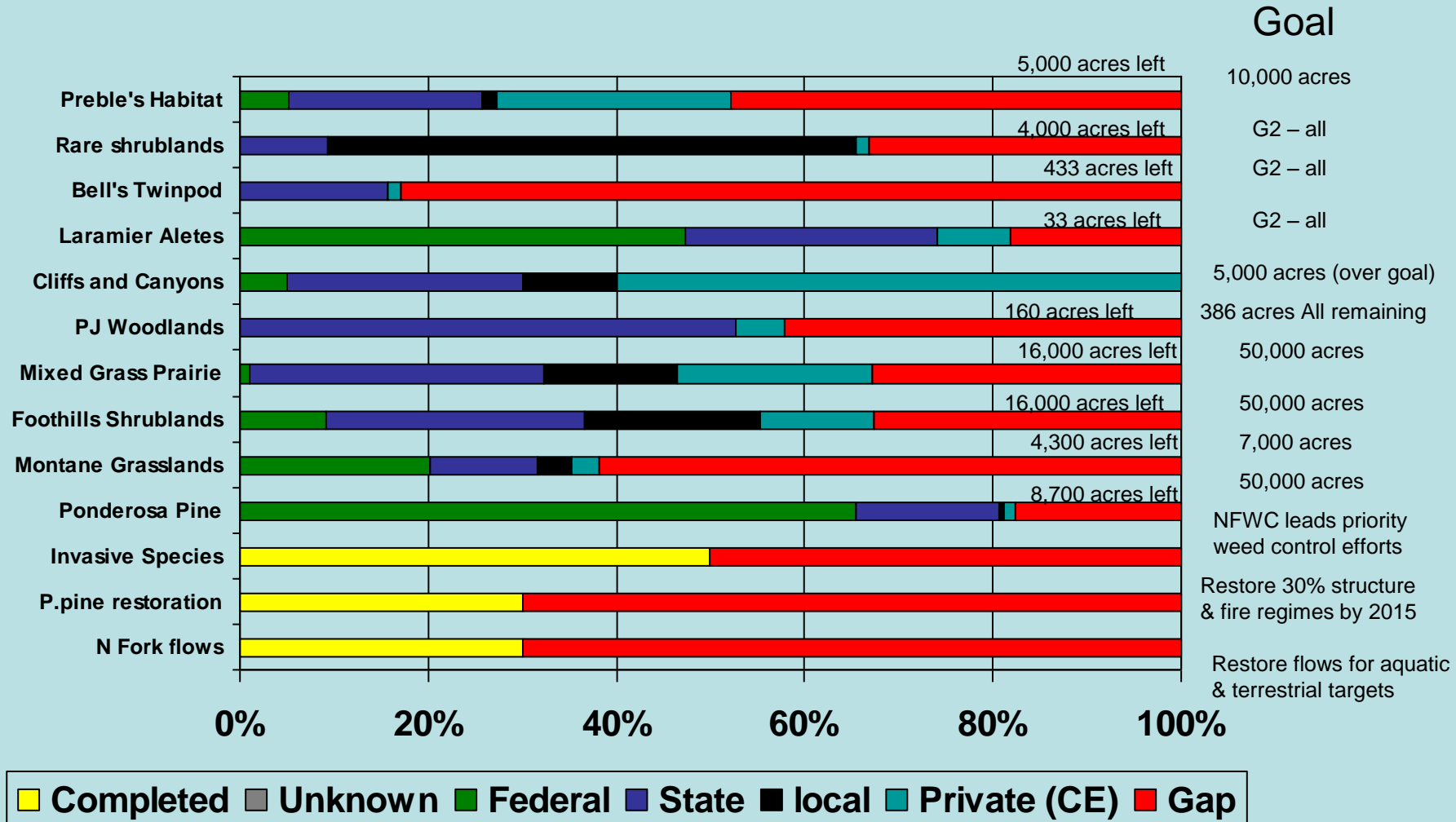


Laramie Foothills: mid 1990s - 2008

- ☀ landscape scale-
strategic approach
- ☀ partners share
risk, responsibility,
resources & leadership
- ☀ increased complexity
- ☀ new & creative tools-
beyond the watershed
- ☀ expanded relationships
- ☀ shared vision for
conservation success
- ☀ measuring success



Laramie Foothills Measuring Success



* Systems have important nested targets that need to be paid attention to
 ** Mapping issues on PJ and cliffs and canyons; System goals are preliminary



Laramie Foothills: 2008 onwards



- ☀ selective strategic engagement approach
- ☀ partners lead & manage risk, responsibility, resources, success
- ☀ tools & strategies were in place to face high costs and complexity
- ☀ expand relationships & shared vision of conservation success
- ☀ supporting & assuring partner success

Laramie Foothills: Community Based- Conservation Results

- ☀ 100,000 conserved private acres connected to 110,000 public acres
- ☀ 50% of watershed committed to conservation
- ☀ integrated invasive species mgmt across boundaries
- ☀ use of prescribed fire as a restoration tool
- ☀ improved grazing management
- ☀ creative approach for ecological flow restoration
- ☀ place-based education program
- ☀ funding/resources/tools for conservation
- ☀ diverse partnerships committed to conservation
- ☀ continuation of compatible livelihoods
- ☀ shared vision for the future

Laramie Foothills: Challenges Ahead

- new tools & strategies to respond to higher costs & increasing complexity
- resources to sustain partners & projects
- training-next generation of conservationists
- monitoring for and responding to new or changed threats
- preparedness for project re-engagement-when, how and who



Laramie Foothills: Approach

Intensive
C-B C

Selective Strategic
Engagement

Conservation Reserve
or “Bull Pen”



- ✓ high biodiversity
- ✓ high threats to biodiversity
- ✓ complex strategies
- ✓ no partner (s) and/or lead role necessary
- ✓ lots of time or \$ needed

- ✓ high biodiversity
- ✓ high threats to biodiversity
- ✓ less complex strategies
- ✓ 1 or more partner (s)
- ✓ TNC to assist with resources, science, planning

- ✓ Low to high threats to biodiversity
- ✓ Partners abating threats
- ✓ TNC monitor and assist when needed

Lessons Learned

Relationships founded on openness, reciprocity, honesty, and integrity

Explicit level of engagement over time

Strategic and prioritized approach to conservation-based on credible data and local knowledge-people & “science”



Partnerships based on understanding & sharing roles, responsibility, risk & resources

Focus on the shared vision/voice-using solution-oriented, creativity, adaptability, embracing complexity, celebrating success

